

**M · J**





**MICHAEL JORDAN'S**  
**STEAK HOUSE • OAK BROOK**

**PLAN AN EXPERIENCE**

Elevate your next event. Allow us to curate the perfect special occasion, both social and corporate. We have the ability to accommodate small, intimate events to extravagant close-down gatherings where we utilize the entire restaurant to fulfill your vision.

**KHRISTON JONES**

*Private Events Manager*

[kjones@crgchicago.com](mailto:kjones@crgchicago.com)

**P:** 630.828.2932 **C:** 773.458.4917

Michael Jordan's Steak House  
1225 W. 22nd St. | Oak Brook, IL 60523

# BREAKFAST AT MJ'S

**\$30 / PERSON**

---

*12 person minimum*

## BEVERAGES

**BIG SHOULDERS COFFEE**

**KILOGRAM ORGANIC HOT TEAS**

**FRESH SQUEEZED ORANGE JUICE**

**CRANBERRY JUICE**

## BITES

**SEASONAL FRUIT TRAY**

**ASSORTED MUFFINS & DANISH**

**SMOKED BACON**

**SEASONAL FRITTATA**



# LUNCH

**GAME PLAN 1 \$45 / PERSON**

---

*includes soft drinks, iced tea, freshly brewed coffee and hot tea*

## APPETIZER

*served family style*

### SIGNATURE GARLIC BREAD

topped with our rich and creamy roth käse blue cheese fondue

## ENTREÉS

*host selects three, guest selects one chef's seasonal preparation*

**GRILLED CHICKEN CAESAR**

**SHRIMP CHOPPED SALAD**

**CREAMY MUSHROOM FETTUCCINE**

**SLICED PRIME NY STRIP**

## DESSERT

*guest selects one*

### CHOCOLATE GANACHE CAKE

topped with housemade sauces and fresh berries

**SEASONAL SORBET**

**GAME PLAN 2 \$55 / PERSON**

---

*includes soft drinks, iced tea, freshly brewed coffee and hot tea*

## APPETIZER

*served family style*

### SIGNATURE GARLIC BREAD

topped with our rich and creamy roth käse blue cheese fondue

## SALADS

*host selects one*

### MIXED GREENS

red wine vinaigrette

### CAESAR SALAD

romaine hearts, olive oil croutons, grana padano, eggless dressing

## ENTREÉS

*host selects three, guest selects one chef's seasonal preparation*

**ROASTED CHICKEN**

**FAROE ISLAND SALMON**

**CREAMY MUSHROOM FETTUCCINE**

**SLICED PRIME NY STRIP**

## SIDE

*served family style*

**YUKON GOLD MASHED POTATOES**

**CHILE LIME CORN**

## DESSERT

*guest selects one*

### CHOCOLATE GANACHE CAKE

topped with housemade sauces and fresh berries

**SEASONAL SORBET**

*flat screen monitor and hdmi cable upon request, as available.*

menu items are seasonal and subject to change. menu is also subject to 7.5% IL sales tax and a service charge.

# DINNER

## GAME PLAN 1 \$90 / PERSON

*includes soft drinks, iced tea, freshly brewed coffee and hot tea*

### APPETIZERS

*served family style*

#### SIGNATURE GARLIC BREAD

topped with our rich and creamy roth käse blue cheese fondue

#### NUESKE'S DOUBLE SMOKED BACON

thick double cut slab bacon, caramelized with burton's maple syrup

### SALADS

*guest selects one*

#### MIXED GREENS

red wine vinaigrette

#### CAESAR SALAD

romaine hearts, olive oil croutons, grana padano, eggless dressing

### ENTREÉS

*host selects three, guest selects one chef's seasonal preparation*

#### SLICED PRIME NY STRIP

#### FILET MIGNON

#### CREAMY MUSHROOM FETTUCCINE

#### ROASTED CHICKEN

#### FAROE ISLAND SALMON

### SIDES

*served family style*

#### GREEN BEANS

#### CHILE LIME CORN

#### YUKON GOLD MASHED POTATOES

### DESSERTS

*host selects three, guest selects one*

#### PEANUT BUTTER PIE

cocoa crust, silky peanut butter, fresh whipped cream

#### KEY LIME PIE

graham cracker crust, fresh whipped cream, meringue

#### CHOCOLATE GANACHE CAKE

topped with housemade sauces and fresh berries

#### SEASONAL SORBET

## GAME PLAN 2 \$110 / PERSON

*includes soft drinks, iced tea, freshly brewed coffee and hot tea*

### APPETIZERS

*served family style*

#### SIGNATURE GARLIC BREAD

topped with our rich and creamy roth käse blue cheese fondue

#### NUESKE'S DOUBLE SMOKED BACON

thick double cut slab bacon caramelized with burton's maple syrup

#### SHRIMP COCKTAIL

cocktail sauce, lime and avocado salad

#### FRIED CALAMARI

spicy marinara, creamy horseradish

### SALADS

*guest selects one*

#### CAESAR SALAD

romaine hearts, olive oil croutons, grana padano, eggless dressing

#### KALE SALAD

goat cheese, candied pecan, honey crisp apple, cranberries with lemon vinaigrette

#### MIXED GREENS

red wine vinaigrette

### ENTREÉS

*host selects three, guest selects one chef's seasonal preparation*

#### BONE-IN RIBEYE 23oz

#### FILET MIGNON

#### CREAMY MUSHROOM FETTUCCINE

#### ROASTED CHICKEN

#### FAROE ISLAND SALMON

#### SEAFOOD FETTUCINE

### SIDES

*served family style*

#### GREEN BEANS

#### CHILE LIME CORN

#### YUKON GOLD MASHED POTATOES

#### FOUR CHEESE MAC

### DESSERTS

*host selects three, guest selects one*

#### PEANUT BUTTER PIE

cocoa crust, silky peanut butter, fresh whipped cream

#### KEY LIME PIE

graham cracker crust, meringue, fresh whipped cream

#### CHOCOLATE GANACHE CAKE

topped with housemade sauces and fresh berries

#### SEASONAL SORBET

*flat screen monitor and hdmi cable upon request, as available.*

menu items are seasonal and subject to change. menu is also subject to 7.5% IL sales tax and a service charge.

# LUNCH & DINNER

## RECEPTION STYLE

---

*includes soft drinks, iced tea, freshly brewed coffee and hot tea*

### STARTERS

*passed or stationed, priced per dozen*

- BACON BITS** 36
- MJ'S CHOPPED SALAD CUP** 36
- SHRIMP SKEWERS** 40
- SWEET GINGER MARINATED CHICKEN SKEWERS** 32
- ROASTED SEASONAL VEGETABLE SKEWERS** 29
- CAPRESE SKEWERS** 32
- MJ'S GRILLED CORN CUPS** 24
- MINI GARLIC BREAD** 24
- MINI WAGYU MEATBALLS** 42
- MINI MIKE SLIDERS** 45
- MINI PRIME NY STRIP CROSTINI** 45
- MINI GRILLED CHEESE & TOMATO BISQUE** 24
- MINI CRAB CAKES** 60

### ENTRÉES

*stationed, priced per person*

- SLICED PRIME NY STRIP** 19
- CREAMY MUSHROOM FETTUCCINE** 12
- ROASTED CHICKEN** 16
- FAROE ISLAND SALMON** 17
- LOBSTER RAVIOLI** 22

### ADDITIONAL REPLENISHMENTS

*priced per person, upon request*

- ROASTED CHICKEN** 13
- CREAMY MUSHROOM FETTUCCINE** 9
- SLICED PRIME NY STRIP** 15
- FAROE ISLAND SALMON** 12
- LOBSTER RAVIOLI** 18

### SWEETS

*priced per dozen, minimum 2 dozen*

- MINI PEANUT BUTTER PIE** 18
- MINI KEY LIME PIE** 18
- MINI CHOCOLATE GANACHE CAKE** 18
- CHOCOLATE CHIP COOKIES** 12



**BARTENDER FEE**

**PRIVATE BARTENDER**

100+

*flat screen monitor and hdmi cable upon request, as available.*

menu items are seasonal and subject to change. menu is also subject to 7.5% IL sales tax and a service charge.



# FLOOR PLANS

## PRIVATE DINING HIGHLIGHTS

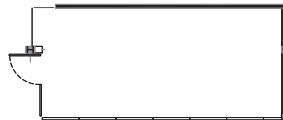
---

- ability to comfortably accommodate parties as intimate as 10 and as large as 250
- outdoor seating available with beautiful living decor
- extremely flexible and versatile dining space able to accommodate a large number of space and table configurations
- conference table, rounds or square tables available in our versatile dining space
- mixed media capable LED tv's throughout
- modern decor with wood accents and the largest private collection of unique MJ photography
- several configurations allow for access to full bar with beer on tap, cocktails and wine
- perfectly suited for both business and social events alike
- ADA accessible

## CHAPEL HILL

---

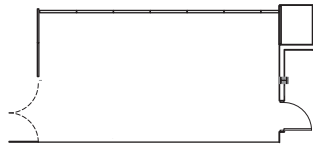
- seating for up to 20
- equipped with 55" LED tv with mixed media capabilities
- ADA accessible



## CHARLOTTE

---

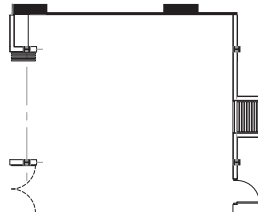
- seating for up to 24
- equipped with 55" LED tv with mixed media capabilities
- ADA accessible



## CHICAGO

---

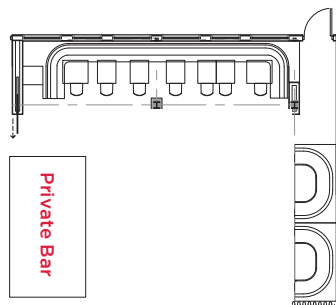
- seating for up to 45
- equipped with two 55" LED tv's with mixed media capabilities
- ADA accessible



## JUPITER

---

- seating for up to 50
- full private bar in room with beer on tap, wine and cocktails
- equipped with 55" LED with mixed media capabilities
- ADA accessible

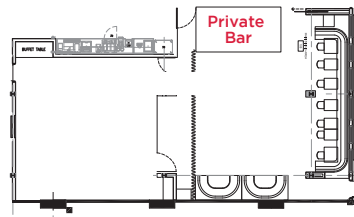




## CENTER COURT

---

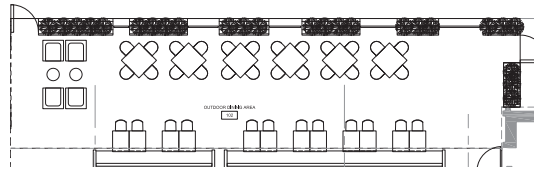
- seating for up to 100
- equipped with three 55" LED tv's with mixed media capabilities
- full bar in room with beer on tap, wine and cocktails
- ADA accessible



## JUPITER PATIO

---

- seating for up to 40
- available as stand alone area and/or jupiter or center court add on
- beautiful outdoor landscaping and living décor
- ADA accessible



## FULL COURT (BUYOUT)

---

- indoor with seating for 250
- patio outdoor seating with living décor and seating for 50
- seating for 320 total indoor and out
- full flexibility in seating and reception arrangement
- 2 full bars with beer on tap, wine and cocktails
- 9 55" LED tv's with mixed media capabilities
- elegant wine wall display featuring michael jordan's private collection
- ADA accessible

